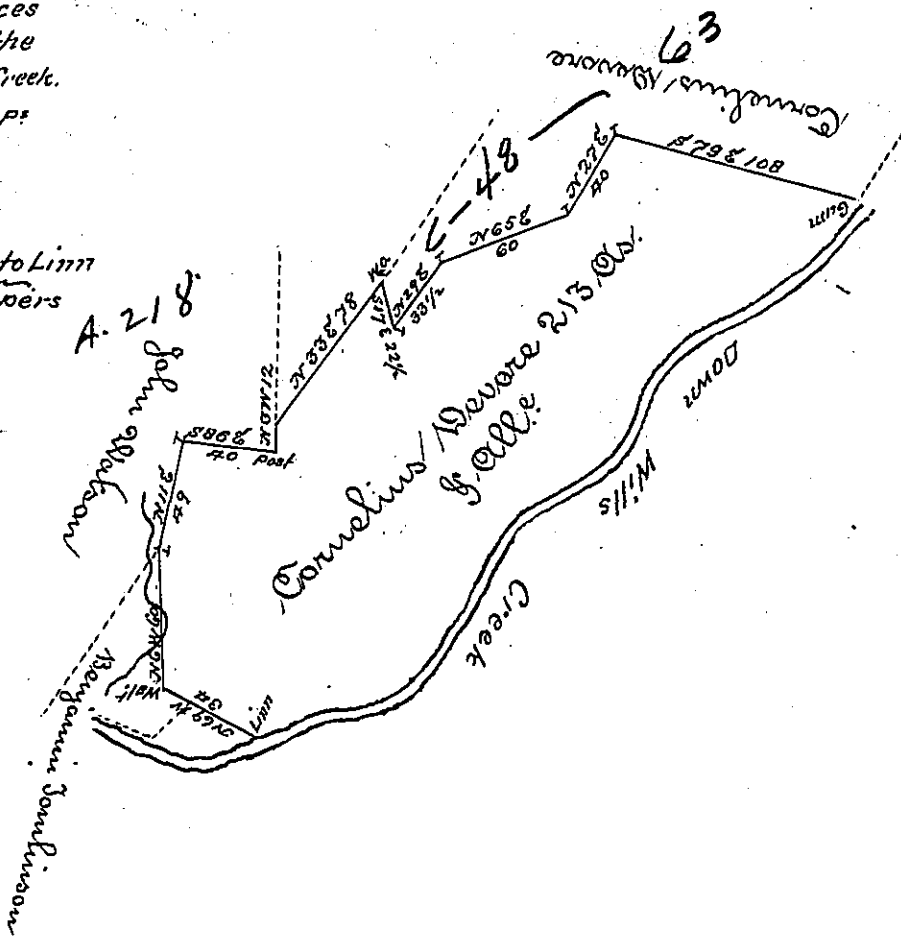


Courses & Distances
from the Gum to the
Linn down Wills Creek.

- S 40 1/2 W 47 P.
 - S 54 W 65.
 - S 24 W 46.
 - S 56 W 48
 - S 28 W 64
 - S 56 W 48
 - S 69 W 47 to Linn
- 565 pers



Situated on the West side of Wills Creek in Londonderry Township Bedford County containing Two hundred and thirteen Acres with the usual allowance of six per cent for ~~the~~ Roads & Surveyed for Cornelius Devore the 6th day of September 1792. On Warrant Dated August 24th 1792~

To Daniel Bradhead Esq. S. G.

George Woods Junr. W. S.

IN TESTIMONY that the above is a copy of the original remaining on file in the Department of Internal Affairs of Pennsylvania, made conformably to an Act of Assembly approved the 16th day of February, 1833, I have hereunto set my Hand and caused the Seal of said Department to be affixed at Harrisburg, this

seventh day of July 1896.

James W. Jatta
Secretary of Internal Affairs.